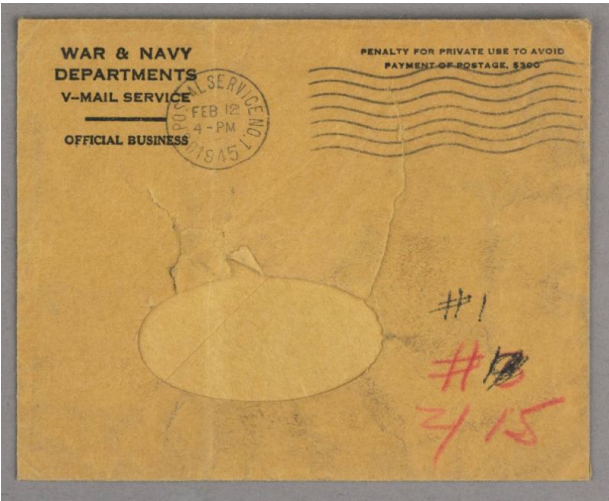


Basic Detail Report



Dimensions
3 3/4 x 4 3/4 in. (9.5 x 12.1 cm)

envelope

Date
1945

Primary Maker
Hayami, Stanley

Medium
paper

Description
Envelope for v-mail 2010.4.202A. Brown paper envelope with oval window cutout, postmarked February 12, 1945. Three handwritten numbers in bottom right corner -- #1, #19, 415. Envelope is scuffed and dirty from age, and two large tears are visible in the envelope front, radiating out from the oval address window.