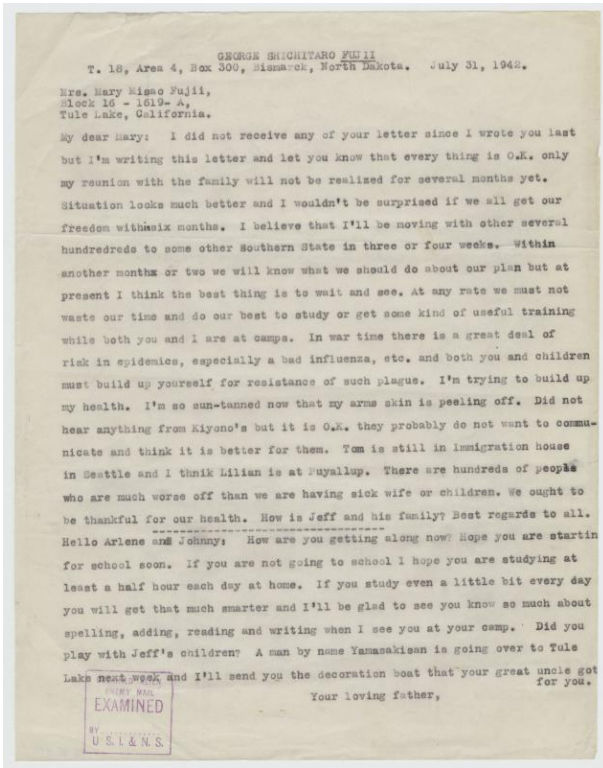


# Basic Detail Report



## [ Letter to Mary Fujii from George Fujii | July 31, 1942 ]

**Date**  
1942

**Primary Maker**  
Fujii, George

**Medium**  
ink, paper

### Description

One page typed letter written to Mary Misao Fujii in Tule Lake Concentration Camp from her husband, George Shichitaro Fujii, in Fort Lincoln Internment Camp on July 31, 1942. George writes that he has not received Mary's letter and writing to let her know that he is O.K., not be reunited with the family for at least several months but is hopeful, being relocated to a southern U.S. state in a few weeks, to study while they are incarcerated, to be careful of epidemics like influenza. The bottom portion of the letter is written to Arlene and Johnny. On the lower left of letter, a hard to read purple square stamp reads "DETENTION ALIEN, ENEMY MAIL, EXAMINED, BY ..., U.S.A. & N.S."

### Dimensions

H: 11 in, W: 8.5 in