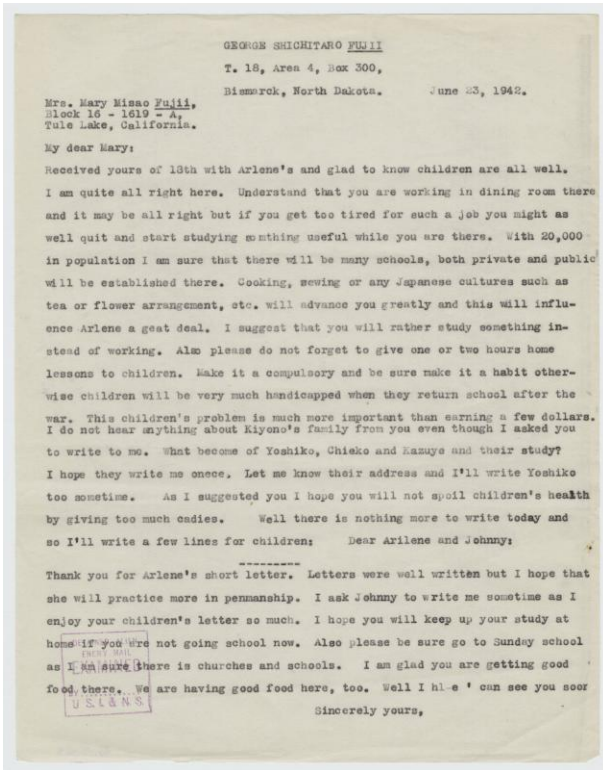


Basic Detail Report



H: 11 in, W: 8.5 in

[Letter to Mary Fujii from George Fujii | June 23, 1942]

Date

1942

Primary Maker

Fujii, George

Medium

ink, paper

Description

1 page typed letter written to Mary Misao Fujii in Tule Lake Concentration Camp from her husband, George Shichitaro Fujii, in Fort Lincoln Internment Camp in Bismarck, North Dakota on June 23, 1942. George writes to her about her job at the dining hall and how he would much rather she study something like sewing, cooking, or flower arrangement as it will benefit their daughter, Arlene, as well. George is also very worried that the children will be at a disadvantage in school when they leave the camps. A difficult to read purple square stamp reads "DETENTION ALIEN, ENEMY MAIL, EXAMINED, BY, U.S.A. & N.S." on lower left.

Dimensions