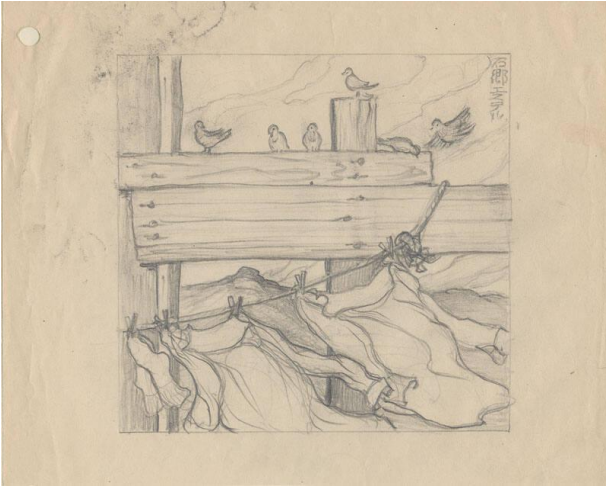


# Basic Detail Report

---



## [Untitled]

### Date

1943-1945

### Primary Maker

Ishigo, Estelle

### Medium

pencil, paper

### Description

Pencil drawing of birds on post and laundry on clothesline blowing in wind. Five birds are on a post and one bird flies towards them.

One end of a clothesline is tied to a beam on right and extends to left edge ; two shirts and a pair of socks are pinned and blow in

the wind. Heart Mountain is visible in center between horizontal beams and clothesline. Rectangular fine line border. Hole punched top left corner.; 1 drawing on paper mounted on paper ; image 5 x 5.125 in., on sheet 6.5 x 8 in., paper support 7.5 x 8.5 in.

### Dimensions

H: 7 1/2 in, W: 8 1/2 in