

# Basic Report

---



**Title:** [White men's yukata with black windowpane check pattern, Hakalau, Hawaii, 193-]

**Date:** 1930-1939

**Primary Maker:** Desaki, Matsue

**Medium:** cotton



**Title:** [Beige woman's kimono with purple asanoha (hemp leaf) design]

**Date:** 1912-1926

**Medium:** silk



**Title:** [Dark blue woman's kimono with small abstract pattern, 1917]

**Date:** 1917

**Medium:** cotton



**Title:** [Girl's red and peach silk kimono with plum blossom, chrysanthemum and bamboo design, Waipahu, Hawaii, ca. 1930]

**Date:** 1925-1935

**Primary Maker:** Oyama, Matsu

**Medium:** silk



**Title:** [Striped Okinawan woman's kimono, Okinawa, Japan]

**Date:** 1900-1960

**Primary Maker:** Kaneshiro, Ushi

**Medium:** silk



**Title:** [Navy women's summer kimono with gray bone design]

**Date:** 1920-1939

**Medium:** silk



**Title:** [Indigo blue kasuri jacket, Hawaii]

**Date:** 1900-1960

**Primary Maker:** Watanabe, Kin

**Medium:** cotton



**Title:** [White muslin kerchief, Hawaii]

**Date:** 1900-1960

**Primary Maker:** Kawakami, Barbara

**Medium:** muslin



**Title:** [White muslin kerchief, Hawaii]

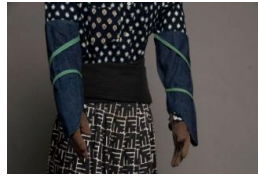
**Date:** 1900-1960

**Primary Maker:** Kawakami, Barbara

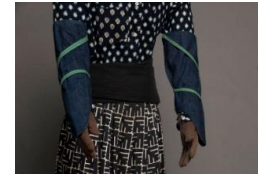
**Medium:** muslin



**Title:** [White and black pleated skirt, Hawaii]  
**Date:** 1900-1960  
**Primary Maker:** Watanabe, Kin  
**Medium:** cotton



**Title:** [Right denim tesashi (arm protector), Waipahu, Hawaii]  
**Date:** 1900-1960  
**Primary Maker:** Watanabe, Kin  
**Medium:** denim, fabric



**Title:** [Left denim tesashi (arm protector), Waipahu, Hawaii]  
**Date:** 1900-1960  
**Primary Maker:** Watanabe, Kin  
**Medium:** denim, fabric



**Title:** [Straw plantation hat]  
**Medium:** straw



**Title:** [Black sash, Hawaii]  
**Date:** 1900-1960  
**Primary Maker:** Watanabe, Kin  
**Medium:** cotton



**Title:** [Blue denim jacket, Waipahu, Hawaii]  
**Date:** 1900-1960  
**Primary Maker:** Kumasaka, Kaku  
**Medium:** denim



**Title:** [Blue palaka shirt, Waipahu, Hawaii]  
**Date:** 1900-1960  
**Primary Maker:** Kawakami, Barbara  
**Medium:** cotton



**Title:** [Rice bag girl's dress, Hawaii]  
**Date:** 1900-1999  
**Primary Maker:** Kawakami, Barbara  
**Medium:** cotton



**Title:** [Blue slat sunbonnet, Hawaii]  
**Date:** 1900-1960  
**Primary Maker:** Kikugawa, Ayako  
**Medium:** cotton



**Title:** [Denim tabi with button closure]  
**Date:** 1900-1960  
**Medium:** denim, plastic



**Title:** [Cream Portuguese-style dongarosu hat, Hawaii]  
**Primary Maker:** Kumasaka, Kaku  
**Medium:** cotton



**Title:** [Blue denim apron with white decorative stitching, Ewa, Hawaii]  
**Date:** 1900-1960  
**Primary Maker:** Tazawa, Haruno  
**Medium:** denim, canvas



**Title:** [Blue denim apron, Waipahu, Hawaii]  
**Date:** 1895-1921  
**Primary Maker:** Watanabe, Kin  
**Medium:** denim



**Title:** [Denim jeans, Tuffies brand]  
**Date:** 1900-1960  
**Medium:** denim



**Title:** [Natural canvas ashigappa (chaps)]  
**Date:** 1900-1960  
**Medium:** cotton



**Title:** [Indigo kasuri jacket, Hawaii]  
**Date:** 1900-1950  
**Primary Maker:** Tazawa, Haruno  
**Medium:** cotton, pearl



**Title:** [Black sash, replica, Hawaii]  
**Date:** 1900-1960  
**Primary Maker:** Kawakami, Barbara  
**Medium:** cotton



**Title:** [Green calico print dirndl skirt with blue waistband, Ewa, Hawaii]  
**Date:** 1900-1960  
**Primary Maker:** Tazawa, Haruno  
**Medium:** cotton





**Title:** [Indigo kasuri blouse, Fukushima, Japan]  
**Date:** 1980  
**Primary Maker:** Saito, Fumiko  
**Medium:** cotton



**Title:** [Dark indigo kasuri dirndl skirt with basketweave pattern, Fukushima, Japan]  
**Date:** 1980  
**Primary Maker:** Saito, Fumiko  
**Medium:** cotton, mother of pearl



**Title:** [Blue and gray striped dirndl skirt, Fukushima, Japan]  
**Date:** 1930-1939  
**Primary Maker:** Schwartz, Alice Kuroiwa  
**Medium:** cotton



**Title:** [Indigo Kurume gasuri jacket, Fukuoka, Japan, ca. 1930]  
**Date:** 1925-1935  
**Primary Maker:** Schwartz, Alice Kuroiwa  
**Medium:** cotton



**Title:** [Indigo kasuri momohiki (pantaloon)]  
**Date:** 1900-1960  
**Primary Maker:** Maeda, Kiyoko  
**Medium:** cotton, elastic



**Title:** [Indigo kasuri momohiki (pantaloon), Hawaii, 1920s]  
**Date:** 1920-1929  
**Primary Maker:** Endo, Tsuyoshi  
**Medium:** cotton



**Title:** [Indigo kasuri haori (jacket), Hiroshima, Japan]  
**Date:** 1900-1960  
**Medium:** cotton



**Title:** [White muslin kerchief, Hawaii]  
**Date:** 1900-1960  
**Primary Maker:** Kawakami, Barbara  
**Medium:** muslin



**Title:** [Pula pula (seedling count) bag]  
**Date:** 1900-1960  
**Primary Maker:** Kumasaka, Kaku  
**Medium:** cotton



**Title:** [Lavendar momohiki (pantaloon), Ewa, Hawaii]  
**Date:** 1900-1960  
**Primary Maker:** Tazawa, Haruno  
**Medium:** cotton, bone



**Title:** [Black boy's hetchi pansu (button-on pants) with red and green pinstripes, Ewa, Hawaii]  
**Date:** 1900-1960  
**Primary Maker:** Tazawa, Haruno  
**Medium:** wool

**Title:** [Right denim kyahan (legging) with kohaze fasteners, Ewa, Hawaii]  
**Date:** 1900-1960  
**Primary Maker:** Tazawa, Haruno  
**Medium:** cotton, copper

**Title:** [Left denim kyahan (legging) with kohaze fasteners, Ewa, Hawaii]  
**Date:** 1900-1960  
**Primary Maker:** Tazawa, Haruno  
**Medium:** cotton, copper



**Title:** [Right denim kyahan (legging) with kohaze fasteners, Ewa, Hawaii]  
**Date:** 1900-1960  
**Primary Maker:** Tazawa, Haruno  
**Medium:** cotton, copper



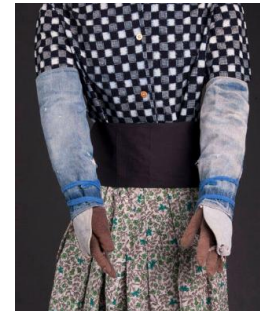
**Title:** [Left denim kyahan (legging) with kohaze fasteners, Ewa, Hawaii]  
**Date:** 1900-1960  
**Primary Maker:** Tazawa, Haruno  
**Medium:** cotton, copper



**Title:** [Left hand denim tekko (hand protector), Oahu, Hawaii]  
**Date:** 1900-1960  
**Primary Maker:** Watanabe, Kin  
**Medium:** denim



**Title:** [Right denim tesashi (arm protector), Ewa, Hawaii]  
**Date:** 1900-1960  
**Primary Maker:** Tazawa, Haruno  
**Medium:** cotton



**Title:** [Left denim tesashi (arm protector), Ewa, Hawaii]  
**Date:** 1900-1960  
**Primary Maker:** Tazawa, Haruno  
**Medium:** cotton



**Title:** [Right kasuri tesashi (arm protector)]  
**Date:** 1900-1960  
**Medium:** cotton



**Title:** [Left kasuri tesashi (arm protector)]  
**Date:** 1900-1960  
**Medium:** cotton



**Title:** [Right kasuri kyahan (legging) with button fasteners]  
**Medium:** cotton, pearl



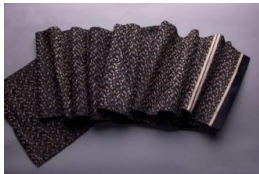
**Title:** [Left kasuri kyahan (legging) with button fasteners]  
**Medium:** cotton, pearl



**Title:** [Double-sided obi with turquoise and purple medallion design and bird and floral design, Fukushima, Japan]  
**Date:** 1900-1960  
**Primary Maker:** Tazawa, Haruno  
**Medium:** silk, cotton



**Title:** [Double-sided child's obi with floral design over orange stripes and floral design over blue background, Fukushima, Japan, 1920-1939]  
**Date:** 1920-1939  
**Primary Maker:** Tazawa, Haruno  
**Medium:** silk



**Title:** [Black obi with small cream and yellow design of flowers and cranes, Hiroshima, Japan, 1898]  
**Date:** 1898  
**Medium:** silk



**Title:** [Denim tabi with white cotton lining]  
**Date:** 1900-1960  
**Medium:** denim, cotton, copper



**Title:** [Black canvas sakana tabi with tire tread soles]  
**Date:** 1900-1960  
**Medium:** canvas, rubber, vinyl, copper



**Title:** [Olive green canvas sakana tabi with tire tread soles]  
**Date:** 1900-1960  
**Medium:** canvas, rubber, vinyl



**Title:** [Slat sunbonnet with green, blue, and yellow trim, Puunene, Maui]  
**Date:** 1900-1960  
**Medium:** straw, cotton



**Title:** [Black and gray silk kimono with basket weave design]  
**Date:** 1900-1960  
**Medium:** silk



**Title:** [White rice bag vest juban (undershirt) with brown sateen collar, Ewa, Hawaii]  
**Date:** 1900-1960  
**Primary Maker:** Tazawa, Haruno  
**Medium:** cotton



**Title:** [Brown haori (jacket), Maui, Hawaii]  
**Date:** 1900-1960  
**Medium:** silk



**Title:** [Beige chirimen nagajuban (long underkimono)]  
**Date:** 1900-1960  
**Medium:** silk



**Title:** [Geta with light brown velvet straps]  
**Date:** 1900-1960  
**Medium:** wood, velvet



**Title:** [Geta with black velvet straps]  
**Medium:** wood, metal, fabric



**Title:** [Pair of white nylon straw waraji sandals, Hanalei, Kauai, 1986]  
**Date:** 1986  
**Primary Maker:** Tasaka, Kenichi  
**Medium:** nylon, wood, paper





**Title:** [Barley straw used to make waraji (sandals), Hiroshima, Japan]  
**Date:** 1900-1960  
**Medium:** barley



**Title:** [Pair of barley straw waraji sandals]  
**Date:** 1900-1960  
**Medium:** straw



**Title:** [Rice straw zori with striped straps, Hiroshima, Japan]  
**Date:** 1990-2004  
**Medium:** straw, cotton



**Title:** [Rice straw zori with twisted pink and beige straps, Hiroshima, Japan, 1996]  
**Date:** 1996  
**Primary Maker:** Takeuchi, Nobuko  
**Medium:** straw, fabric



**Title:** [Multicolored yarn and straw zori, Hanalei, Kauai, 1985]  
**Date:** 1985  
**Primary Maker:** Tasaka, Kenichi  
**Medium:** straw, yarn, fabric



**Title:** [Barley straw zori, Hanalei, Kauai]  
**Date:** 1980-2004  
**Primary Maker:** Tasaka, Kenichi  
**Medium:** straw, fabric



**Title:** [Denim tabi with automobile tire soles, Kona, Hawaii]  
**Date:** 1900-1960  
**Primary Maker:** Sakanishi, Shigetaro  
**Medium:** denim, tire, nail, rubber



**Title:** [Navy blue striped Okinawan kimono, Okinawan, Japan, 1914]  
**Date:** 1914  
**Primary Maker:** Kaneshiro, Ushi  
**Medium:** silk, wool



**Title:** [Double-sided obi with peony design on orange background and blue flower design on light blue, 193-]  
**Date:** 1930-1939  
**Medium:** silk





**Title:** [Champagne brocade obi with flying crane design]  
**Medium:** silk



**Title:** [Peach, tan and beige parasol, Fukuoka, Japan, 1924]  
**Date:** 1924  
**Medium:** linen, wood, leather, metal



**Title:** [Double-sided obi with peony design and star lily design, Ewa, Hawaii, 193-]  
**Date:** 1930-1939  
**Primary Maker:** Tazawa, Haruno  
**Medium:** silk, wool



**Title:** [Narrow obi with red and cream triangle design]  
**Date:** 1900-1960  
**Primary Maker:** Tazawa, Haruno  
**Medium:** silk



**Title:** [Double-sided rayon and silk obi with box design and pink flower design, Ewa, Hawaii, 193-]  
**Date:** 1930-1939  
**Primary Maker:** Tazawa, Haruno  
**Medium:** rayon, silk



**Title:** [Double-sided cream silk brocade obi with feathers, iris and pine cone design over olive, brown and lavender wavy lines, Fukushima, Japan, 1898]  
**Date:** 1898  
**Primary Maker:** Tazawa, Haruno  
**Medium:** silk



**Title:** [Gray vinyl straps, Waialua, Hawaii]  
**Date:** 1900-1960  
**Medium:** vinyl, twine



**Title:** [Guava wood geta, Waialua, Hawaii, 193-]  
**Date:** 1930-1939  
**Primary Maker:** Kibota, Haruo  
**Medium:** wood, leather



**Title:** [Blue denim tabi with rubber soles, Ewa, Hawaii]  
**Date:** 1900-1999  
**Primary Maker:** Tazawa, Haruno  
**Medium:** rubber, denim, cotton



**Title:** [Double-strap zori with lantern and mountain design]

**Date:** 1900-1960

**Primary Maker:** Hirohata, Mikiko

**Medium:** wood, rubber, vinyl, fabric



**Title:** [Geta baseboards, Waialua, Hawaii]

**Date:** 1900-1960

**Medium:** redwood, fabric



**Title:** [Fine rush zori with velveteen and brocade straps, Yamaguchi, Japan]

**Date:** 1900-1960

**Primary Maker:** Hirohata, Mikiko

**Medium:** straw, brocade



**Title:** [Black lacquered geta, 193-]

**Date:** 1930-1939

**Primary Maker:** Hirohata, Mikiko

**Medium:** wood, velvet, brocade



**Title:** [Straw mat zori with rubber sole, Waialua, Hawaii]

**Date:** 1900-1960

**Medium:** straw, rubber, corduroy, canvas



**Title:** [Brocade zori, or pokkuri, with crane and shochikubai design]

**Date:** 1900-1960

**Medium:** brocade, rubber



**Title:** [Black velveteen straps, Waialua, Hawaii]

**Date:** 1900-1960

**Medium:** velveteen, twine



**Title:** [Black velveteen straps, Waialua, Hawaii]

**Date:** 1900-1960

**Medium:** velveteen, twine



**Title:** [Black velveteen straps, Waialua, Hawaii]

**Date:** 1900-1960

**Medium:** velveteen, twine



**Title:** [Floral pattern zori straps, Waialua, Hawaii]  
**Date:** 1900-1960  
**Medium:** fabric, cotton, twine

**Title:** [Floral pattern zori straps, Waialua, Hawaii]  
**Medium:** fabric, cotton, twine

**Title:** [Floral pattern zori straps, Waialua, Hawaii]  
**Date:** 1900-1960  
**Medium:** fabric, cotton, twine



**Title:** [Floral pattern zori straps, Waialua, Hawaii]  
**Date:** 1900-1960  
**Medium:** fabric, cotton, twine



**Title:** [Purple and beige kimono with square plaid design, Kapaa, Hawaii]  
**Date:** 1900-1960  
**Primary Maker:** Yoneji, Matsue  
**Medium:** wool



**Title:** [Purple chirimen kimono with bamboo design, Kanazawa, Japan, 189-]  
**Date:** 1890-1899  
**Medium:** silk



**Title:** [Black kimono with pine and ume (plum) blossom design]  
**Date:** 1900-1960  
**Medium:** silk



**Title:** [Striped tanzen (padded kimono)]  
**Date:** 1900-1960  
**Medium:** silk, cotton



**Title:** [Pale yellow Niigata chirimen kimono with valley or wave design, Niigata, Japan]  
**Date:** 1900-1960  
**Medium:** silk



**Title:** [Gray kimono with black pinstripes]  
**Date:** 1912  
**Medium:** wool, cotton



**Title:** [Muted green kimono with kata komon (small stencil design) rectangle and triangle pattern]  
**Date:** 1900-1960  
**Medium:** wool, cotton



**Title:** [Muted lavender kimono with grid and plus mark pattern]  
**Date:** 1900-1960  
**Medium:** wool, cotton



**Title:** [Double-sided obi with peony design and embroidered lavender flowers on pink and coral brocade design, Ewa, Hawaii, 193-]  
**Date:** 1930-1939  
**Primary Maker:** Tazawa, Haruno  
**Medium:** silk, wool



**Title:** [Dark blue child's kimono with flowers and honeycomb pattern, Waipahu, Hawaii]  
**Date:** 1900-1960  
**Primary Maker:** Oyama, Matsu  
**Medium:** silk



**Title:** [Dark purple kimono with rose and chrysanthemum design, Waipahu, Hawaii, 1933]  
**Date:** 1933  
**Primary Maker:** Oyama, Matsu  
**Medium:** wool



**Title:** Black haori (jacket) with paulownia mon]  
**Date:** 1900-1960  
**Medium:** silk



**Title:** [Navy blue chirimen michiyuki, Hiroshima, Japan]  
**Medium:** silk



**Title:** [Blue homongi (visiting kimono) with rose design over tone on tone arrow pattern, Ewa, Hawaii]  
**Date:** 1900-1960  
**Medium:** silk





**Title:** [Dark gray kimono with bullseye pattern]  
**Date:** 1900-1960  
**Medium:** silk



**Title:** [Dark indigo blue kasuri kimono with konoko (fawn spot) pattern]  
**Date:** 1900-1960  
**Medium:** cotton



**Title:** [Boy's Day fukusa with two samurai on horseback design]  
**Date:** 1900-1960  
**Medium:** fabric



**Title:** [Red kotobuki fukusa]  
**Date:** 1900-1960  
**Medium:** cotton



**Title:** [Red kotobuki fukusa with white border and tassels]  
**Date:** 1900-1960  
**Medium:** fabric



**Title:** [Blue and white yukata with gobanji pattern]  
**Date:** 1900-1960  
**Medium:** cotton



**Title:** [Double-sided obi with brown bird design and brown and gold swirls on blue-green design]  
**Date:** 1900-1960  
**Medium:** silk



**Title:** [Brown kimono with hexagon, loop and triangle pattern]  
**Date:** 1917  
**Medium:** silk



**Title:** [Hakata shibori nightgown]  
**Date:** 1900-1960  
**Primary Maker:** Hawaii  
**Medium:** cotton



**Title:** [Dark brown kimono with check pattern]  
**Date:** 1900-1960  
**Medium:** cotton

**Title:** [Kasuri yukata]  
**Date:** 1880-1960  
**Medium:** cotton



**Title:** [Olive green and brown nagajuban (long underkimono) with circle and "nu" character pattern]  
**Date:** 1900-1960  
**Medium:** silk, cotton



**Title:** [Dark purple kimono with sakura and leaf design]  
**Date:** 1900-1960  
**Medium:** silk



**Title:** [Dark brown montsuki kimono with phoenix and pine]  
**Medium:** silk



**Title:** [Dark brown kimono with pine cone design]  
**Medium:** silk



**Title:** [Red silk montsuki kimono with bamboo design]  
**Medium:** silk, gold thread



**Title:** [Off-white silk kimono with plum blossom design]  
**Date:** 1880-1920  
**Medium:** silk, gold thread, silver thread



**Title:** [Indigo blue and turquoise kasuri kimono]  
**Medium:** cotton



**Title:** [Blue striped sensuji worker's jacket, Hakalau, Hawaii, 193-]

**Date:** 1930-1939

**Primary Maker:** Kaneshiro, Elaine Kikue

**Medium:** cotton



**Title:** [Navy blue haori (jacket) with hemp leaf design]

**Date:** 1900-2004

**Medium:** silk



**Title:** [Handwoven tubular honbukuro obi with black and brown checkered design of Chinese characters and landscape]

**Date:** 1900-1960

**Medium:** silk



**Title:** [White yukata with navy flowers and leaves design, 193-]

**Date:** 1930-1939

**Medium:** cotton



**Title:** [Taupe kimono with twisted ribbon pattern]

**Date:** 1900-1918

**Medium:** cotton, wool



**Title:** [Brown and black kimono with turquoise lining]

**Date:** 1900-1960

**Medium:** silk, cotton



**Title:** [Taupe kimono with origami crane design]

**Date:** 1918

**Medium:** silk



**Title:** [Cream obijime with embroidered crane design]

**Date:** 1900-1960

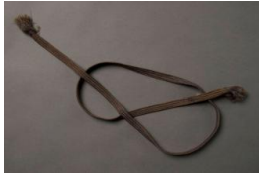
**Medium:** silk, embroidery thread



**Title:** [Gold and silver braided obijime]

**Date:** 1900-1960

**Medium:** silk



**Title:** [Blue-gray braided obijime cord]  
**Date:** 1900-1960  
**Medium:** silk



**Title:** [Khaki braided obijime cord with feather design]  
**Date:** 1900-1960  
**Medium:** silk



**Title:** [Cream single braid obijime edged with green, yellow and gold]  
**Date:** 1900-1960  
**Medium:** silk



**Title:** [Cream and coral red koshi himo (sash) with silver speckles]  
**Date:** 1900-1960  
**Medium:** silk



**Title:** [Pink koshi himo (sash) with white dot design]  
**Date:** 1900-1960  
**Medium:** silk



**Title:** [Red brocade koshi himo (sash)]  
**Date:** 1900-1960  
**Medium:** silk



**Title:** [Red and cream obijime with gold lame]  
**Date:** 1900-1960  
**Medium:** silk, cotton



**Title:** [Orange obi-dome with cord]  
**Date:** 1900-1960  
**Medium:** stone, silver, cord



**Title:** [Peach chirimen fabric]  
**Date:** 1900-1960  
**Medium:** silk, cardboard





**Title:** [Pink scarf with fringe]  
**Date:** 1900-1960  
**Medium:** satin



**Title:** [Off-white satin obijime (cord) with silk and gold shochikubai motif]  
**Date:** 1900-1960  
**Medium:** satin



**Title:** [Obijime box with red edges]  
**Date:** 1900-1960  
**Medium:** cardboard



**Title:** [Maroon obidome on orange and tan cord]



**Title:** [Obidome cord box with green and yellow top]  
**Date:** 1930-1939  
**Medium:** cardboard



**Title:** [Red tassels]  
**Date:** 1900-1960  
**Primary Maker:** Japan  
**Medium:** cord



**Title:** [Slim box for tassels]  
**Date:** 1900-1960  
**Medium:** cardboard



**Title:** [Pink koshi himo (sash) with white dot design]  
**Date:** 1900-1960  
**Medium:** silk



**Title:** [Kote]  
**Date:** 1900-1960  
**Medium:** wood, iron



**Title: [Kote]**  
**Medium:** wood, iron



**Title: [Kote]**  
**Date:** 1900-1960  
**Medium:** wood, iron



**Title: [Magnifying glass]**  
**Date:** 1900-1960  
**Medium:** glass, metal



**Title: [Scissors]**  
**Date:** 1900-1960  
**Medium:** metal



**Title: [Ruler]**  
**Date:** 1900-1960  
**Medium:** metal



**Title: [Handmade bunmawashi (compass) for white lines]**  
**Date:** 1900-1960  
**Medium:** bamboo, metal, string, horsehair



**Title: [Handmade bunmawashi (compass) for black lines]**  
**Date:** 1900-1960  
**Medium:** bamboo, metal, string, horsehair



**Title: [Handmade mon-no-kata-kiri (mon stencil knife)]**  
**Date:** 1900-1960  
**Medium:** bamboo, metal, string



**Title: [Black hoso-kaki fude (stenciling brush)]**  
**Date:** 1900-1960  
**Medium:** bamboo



**Title:** [Natural hoso-kaki fude (stenciling brush)]  
**Date:** 1900-1960  
**Medium:** bamboo



**Title:** [Mon-no-burashi (mon stenciling brush)]  
**Date:** 1900-1960  
**Medium:** bamboo



**Title:** [Mon-no-burashi (mon stenciling brush)]  
**Date:** 1900-1960  
**Medium:** bamboo



**Title:** [Mon-no-burashi (mon stenciling brush)]  
**Date:** 1900-1960  
**Medium:** bamboo



**Title:** [Red mon-no-burashi (mon stenciling brush)]  
**Medium:** bamboo



**Title:** [Mon-no-burashi (mon stenciling brush)]  
**Date:** 1900-1960  
**Medium:** bamboo



**Title:** [Extra-large blue bridal yutan (furniture cover) with white oak leaf cluster mon, Hawaii, ca. 1936]  
**Date:** 1935-1936  
**Primary Maker:** Shigemura, Ko  
**Medium:** cotton



**Title:** [Small blue bridal yutan (furniture cover) with white oak leaf cluster mon, Hawaii, ca. 1936]  
**Date:** 1935-1936  
**Primary Maker:** Suzuki, Elaine Yayoe  
**Medium:** cotton



**Title:** [Blue kyodai yutan (furniture cover) with white oak leaf cluster mon, Hawaii, ca. 1936]  
**Date:** 1935-1936  
**Primary Maker:** Suzuki, Elaine Yayoe  
**Medium:** cotton

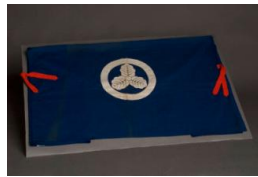


**Title:** [Medium blue bridal yutan (furniture cover) with white oak leaf cluster mon, Hawaii, ca. 1936]

**Date:** 1935-1936

**Primary Maker:** Suzuki, Elaine Yayoe

**Medium:** cotton



**Title:** [Large blue bridal yutan (furniture cover) with white oak leaf cluster mon, Hawaii, ca. 1936]

**Date:** 1935-1936

**Primary Maker:** Suzuki, Elaine Yayoe

**Medium:** cotton



**Title:** [Sumi bako]

**Date:** 1900-1960

**Medium:** wood



**Title:** [Suzuri (inkwell) and Sumi (ink stick)]

**Date:** 1900-1960

**Medium:** stone, ink



**Title:** [Bottom half of yanagi gori (basket trunk), Hiroshima, Japan, ca. 1913]

**Date:** 1908-1913

**Medium:** willow



**Title:** [Cream nagajuban (long underkimono) with wave and bird design]

**Date:** 1900-1960

**Primary Maker:** Tazawa, Haruno

**Medium:** silk



**Title:** [White yukata with fan and flower design]

**Date:** 1900-1960

**Medium:** cotton



**Title:** [Hanjuban (half underkimono) with gray collar and faggoting detail on sleeves, Hawaii, 192-]

**Date:** 1920-1929

**Primary Maker:** Tazawa, Haruno

**Medium:** cotton, silk



**Title:** [Hanjuban (half underkimono) with Nihon-shishu embroidered collar and dog design on sleeves, Hawaii, 193-]

**Date:** 1930-1939

**Primary Maker:** Tazawa, Elsie

**Medium:** silk, embroidery thread





**Title:** [Taupe koshimaki (underskirt), Hawaii, 192- ]  
**Date:** 1920-1929  
**Primary Maker:** Tazawa, Haruno  
**Medium:** silk, cotton



**Title:** [Cream nagajuban (long underkimono)]  
**Date:** 1900-1960  
**Medium:** silk



**Title:** [Double-sided obi with cranes flying of Mt. Fuji and pines on island landscape design]  
**Date:** 1900-1960  
**Medium:** silk



**Title:** [Double-sided brocade obi with crane, pine, chrysanthemum and cherry blossom design]  
**Date:** 1917-1939  
**Medium:** silk



**Title:** [Gold brocade obi with landscape pattern]  
**Date:** 1900-1960  
**Medium:** silk



**Title:** [Double-sided obi with cream wavy abstract design and brown dot abstract design]  
**Date:** 1930-1939  
**Medium:** wool, rayon



**Title:** [Gray kimono with wave pattern lining along collar]  
**Medium:** silk



**Title:** [Gray haori (jacket) with tan and maroon stripes]  
**Date:** 1900-1960



**Title:** [Off-white T-shaped eri (collar)]  
**Date:** 1900-1960  
**Medium:** cotton



**Title:** [Organza kimono sleeve protectors]  
**Date:** 1900-1960  
**Medium:** silk



**Title:** [Red koshimaki (underskirt)]  
**Date:** 1930-1939  
**Medium:** silk



**Title:** [Peach koshimaki (underskirt) with red leaf design]  
**Date:** 1920-1939  
**Medium:** rayon



**Title:** [White sarashi cloth eri (collar)]  
**Date:** 1920-1939  
**Medium:** muslin



**Title:** [Child's Hasami-nashi kimono with sakura and wave design, Hawaii, 1927]  
**Date:** 1900-1960  
**Primary Maker:** Kumasaku, Kaku  
**Medium:** cotton, muslin



**Title:** [Child's haori (jacket) with purple sakura, Hawaii, 1927]  
**Date:** 1927  
**Primary Maker:** Kumasaku, Kaku  
**Medium:** cotton, muslin



**Title:** [White yukata with navy blue nami (wave) design]  
**Date:** 1900-1960  
**Medium:** cotton



**Title:** [Obi ita (Obi support) with fan design]  
**Medium:** silk, cardboard



**Title:** [Peach koshimaki (underskirt) with red leaf design]  
**Date:** 1920-1929  
**Medium:** silk, muslin



**Title:** [Brown tsumugi-gasuri kimono with white square pattern, Kumamoto, Japan, 1918]  
**Date:** 1918  
**Medium:** silk, muslin



**Title:** [White yukata with navy blue iris design]  
**Date:** 1900-1960  
**Medium:** cotton



**Title:** [White yukata with navy blue bridge design]  
**Date:** 1900-1960  
**Medium:** cotton



**Title:** [Yellow, white and coral kimono with shibori sakura design, Ewa, Hawaii, 193-]  
**Date:** 1930-1939  
**Primary Maker:** Tazawa, Elsie  
**Medium:** cotton



**Title:** [Yanagi gori (basket trunk), Fukushima, Japan, ca. 1917]  
**Date:** 1917  
**Medium:** bamboo



**Title:** [Cream obijime with embroidered flower design]  
**Date:** 1900-1960  
**Medium:** silk, embroidery thread